



Storia dell'arte del cristianesimo orientale

Prof. Emanuela Fogliadini

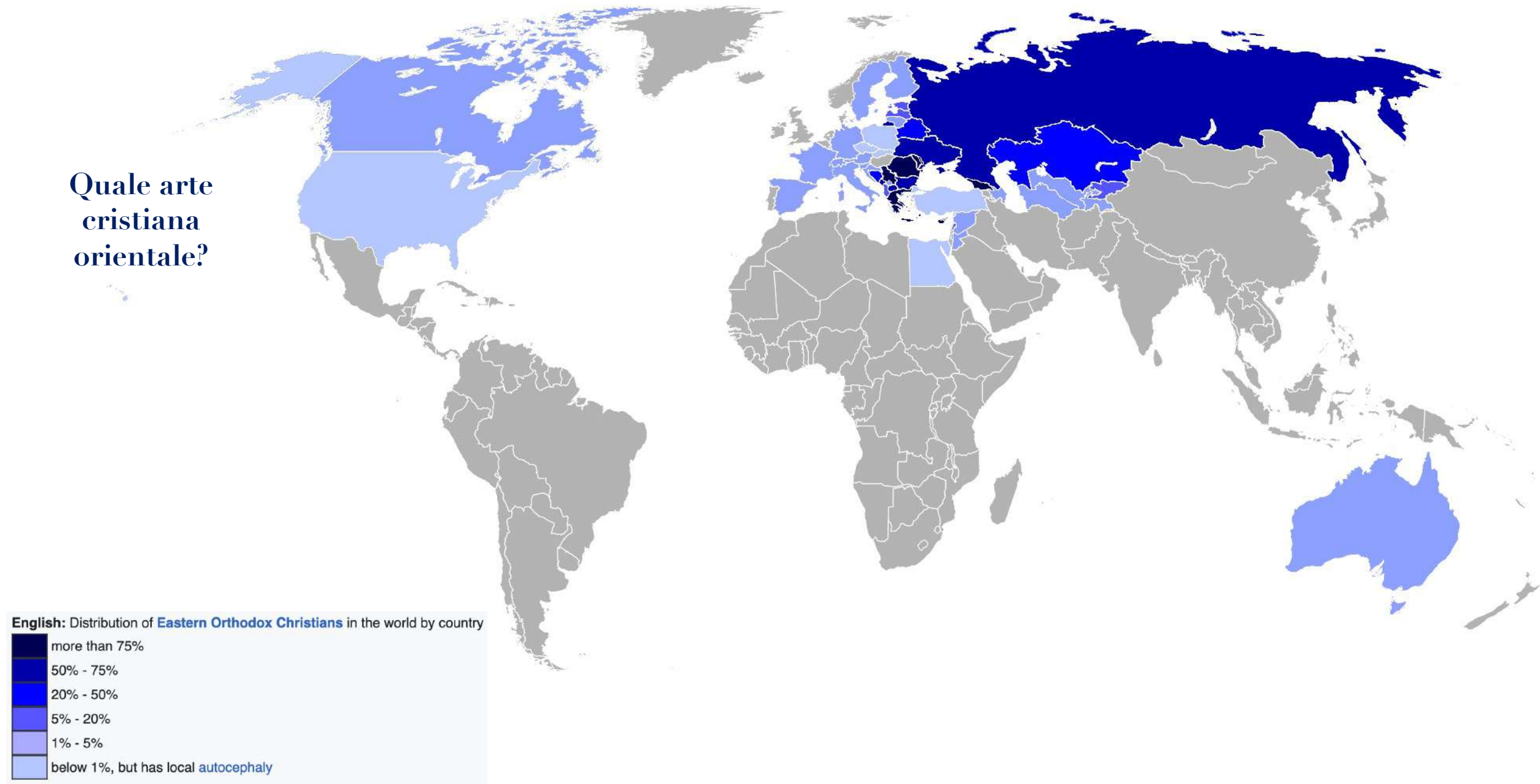
UTE, Milano 2022



Quale arte cristiana?



Quale arte cristiana orientale?



English: Distribution of **Eastern Orthodox Christians** in the world by country

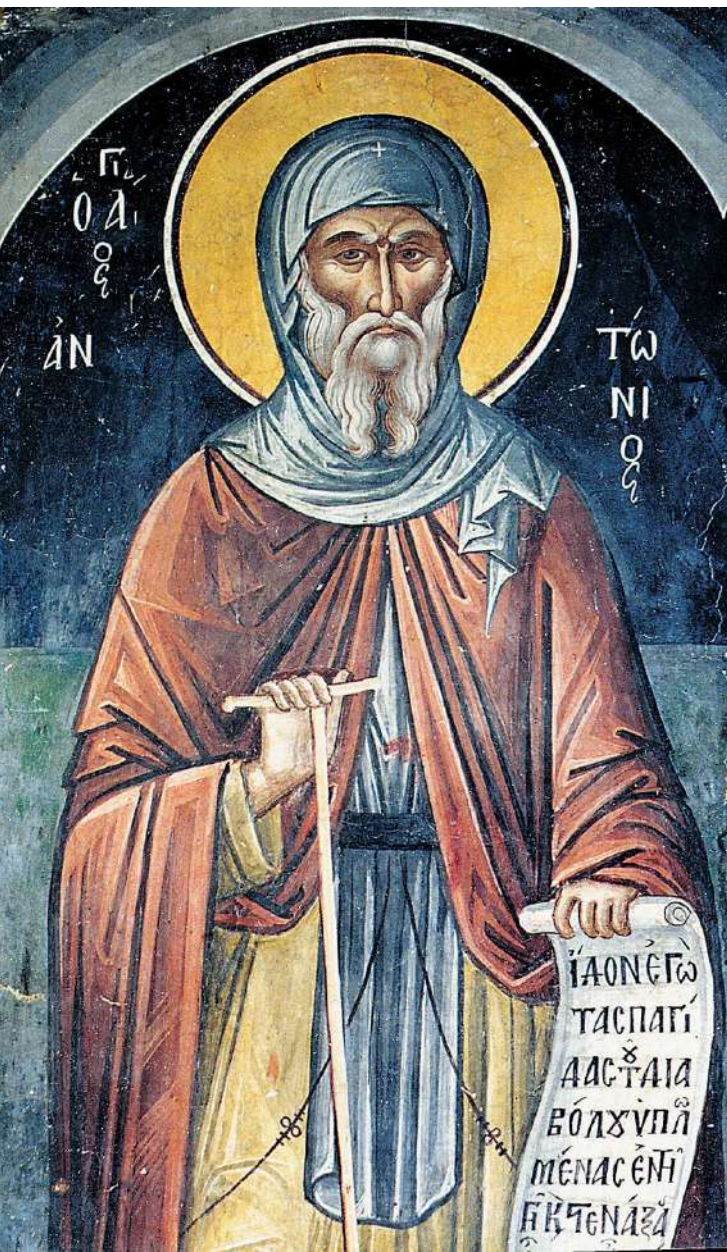
Armenia, 301



Georgia, 327



Egitto, inizio IV secolo



Monastero di Deir Mar Musa



Siria, inizio IV secolo



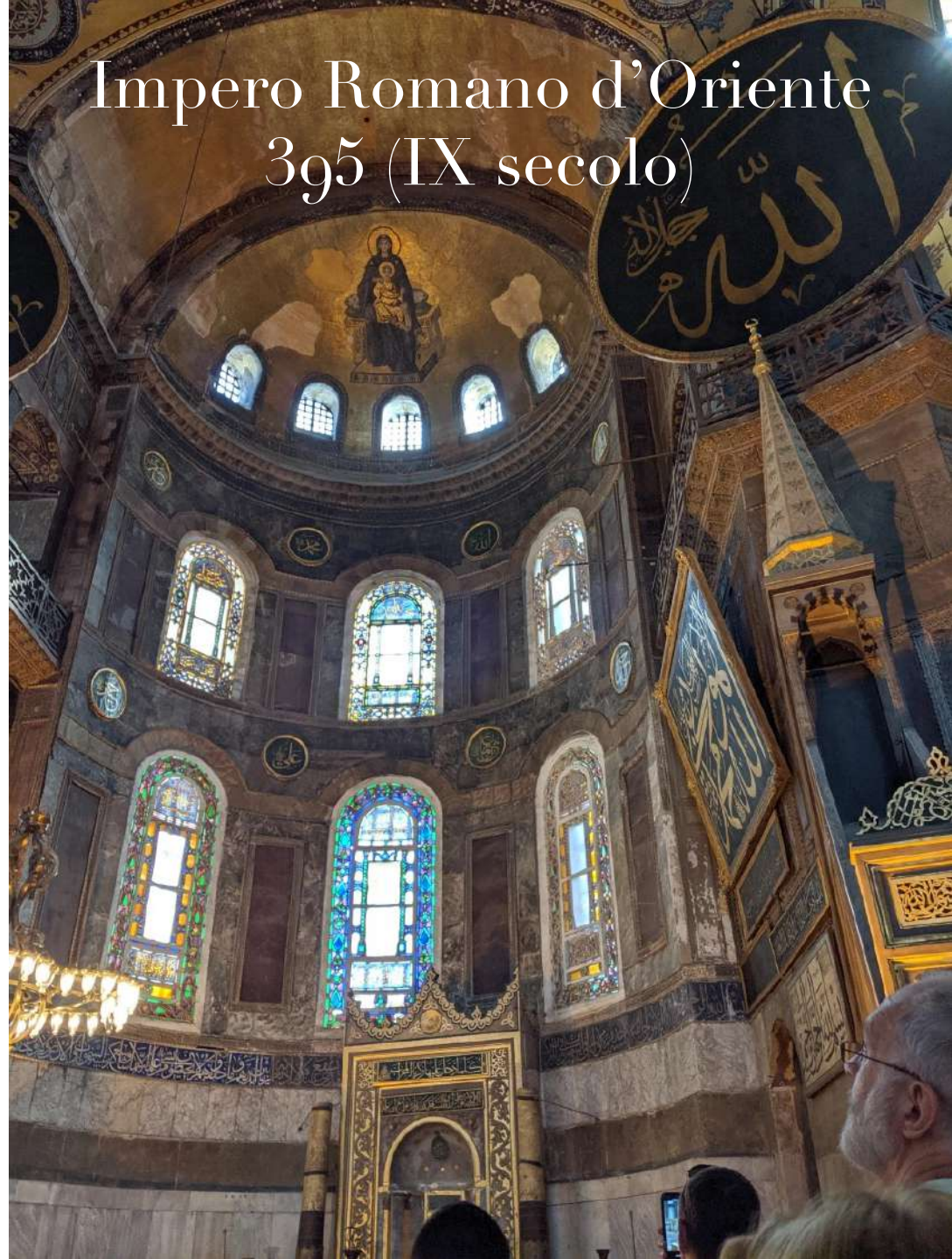
Etiopia
prima metà IV secolo



Impero Romano, 380



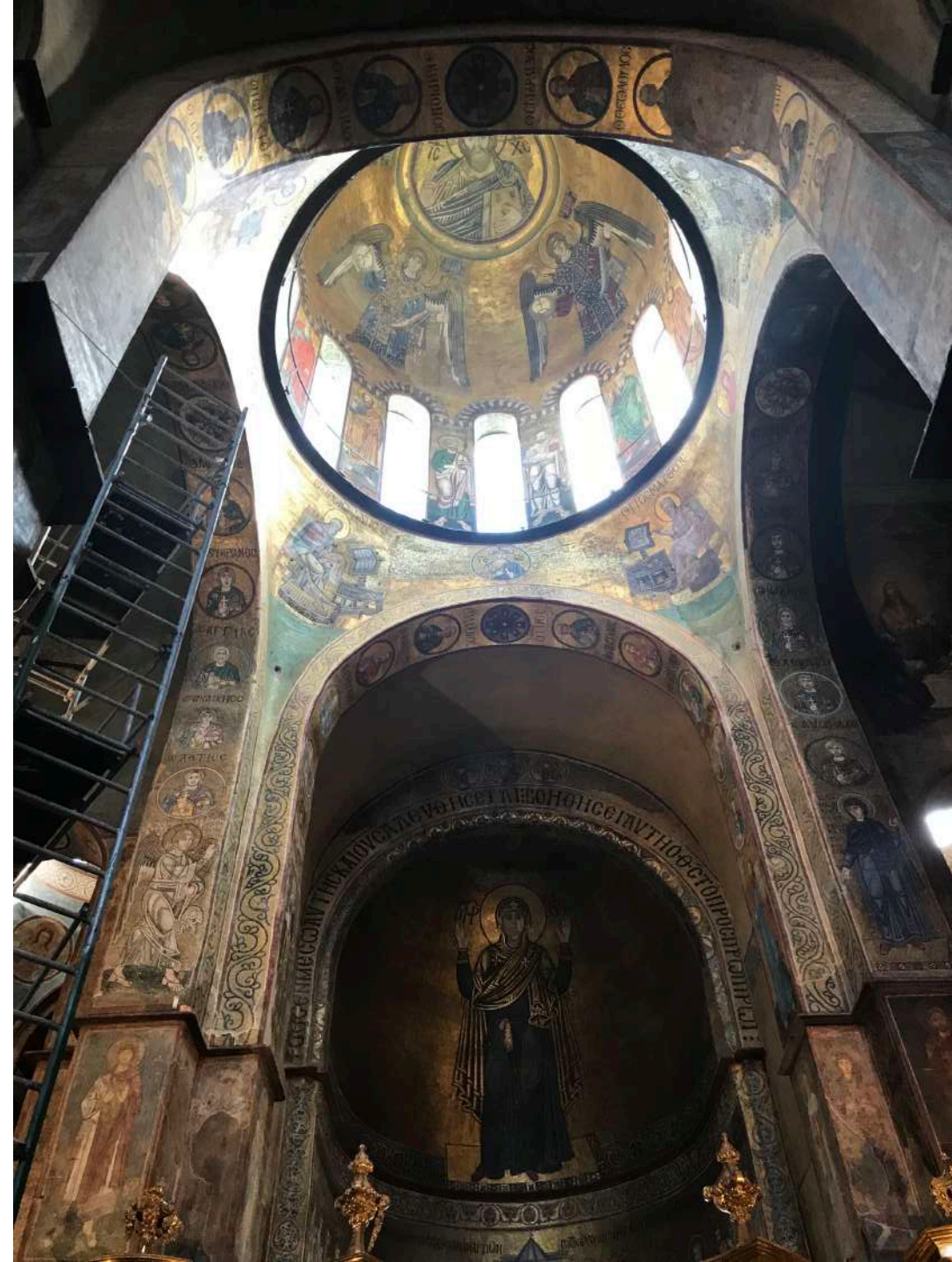
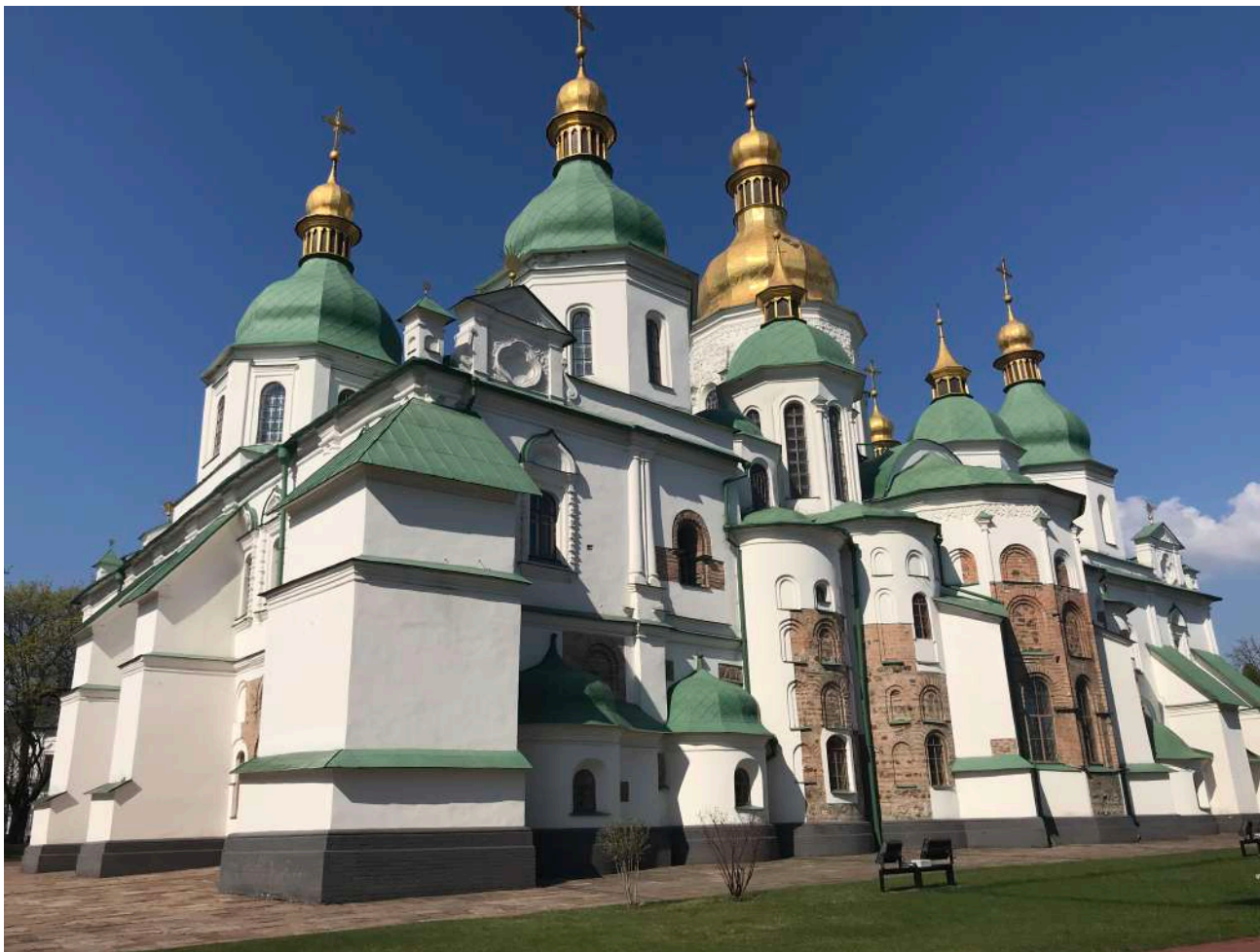
Impero Romano d'Oriente
395 (IX secolo)



Santa Montagna Athos, 963



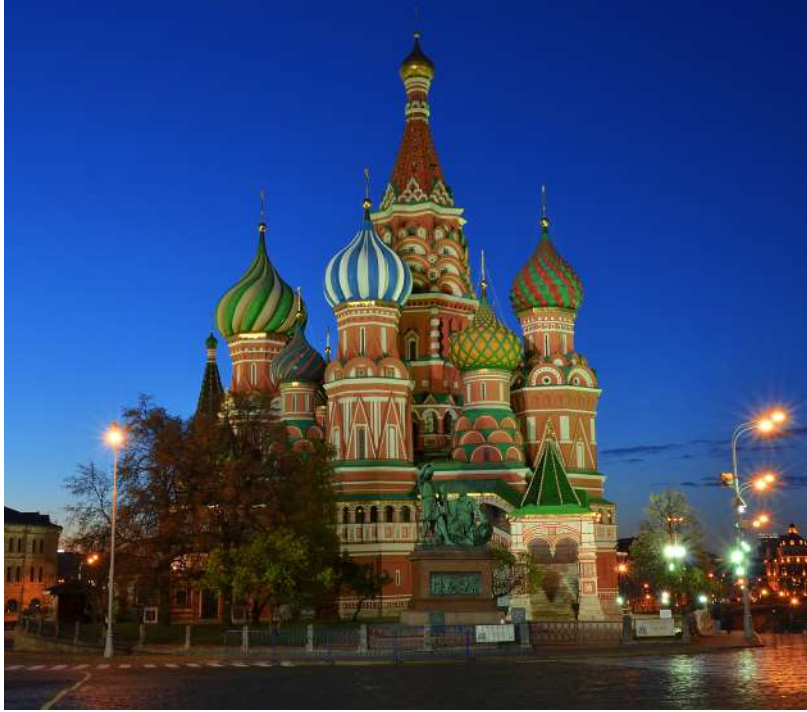
Rus' di Kiev, 980



Katholikon Grecia, metà XI secolo







I cristianesimi e i pronunciamenti sull'arte

- Sinodo di Elvira: 313
- Settimo Concilio Ecumenico – Nicea II: 787
- Lutero, *Contro i profeti celesti. Sulle immagini e sul sacramento*: 1525
- Calvino, *Istituzione della religione cristiana*, libro IX: 1536
- Concilio ortodosso-russo dei cento capitoli: 1551
- Concilio cattolico di Trento: 3 dicembre 1563
- Concilio ortodosso-russo di Mosca: 1666
- Concilio cattolico Vaticano II, *Sacrosanctum Concilium*, 124-125: 1963

Atti di Giovanni, 125-150 d.C.

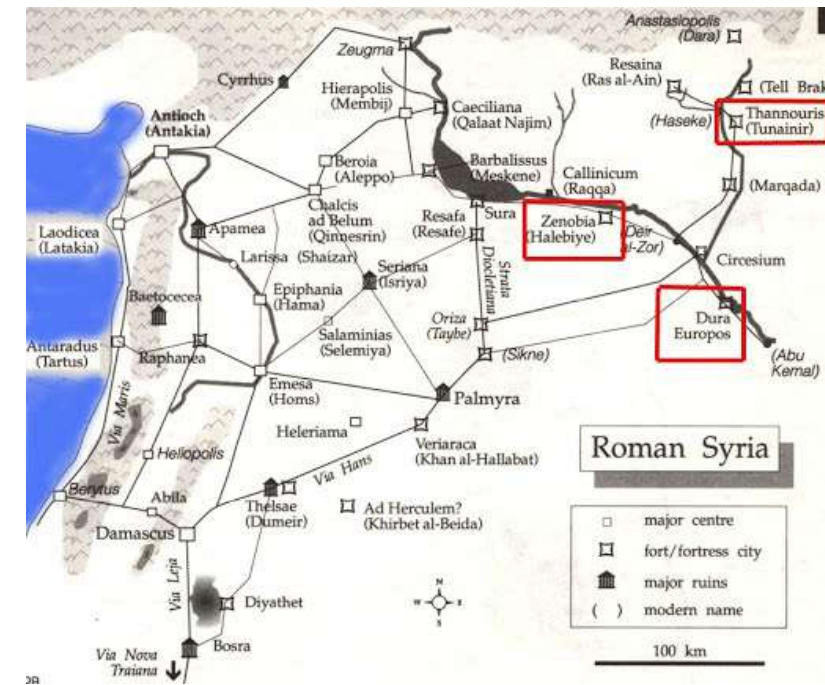
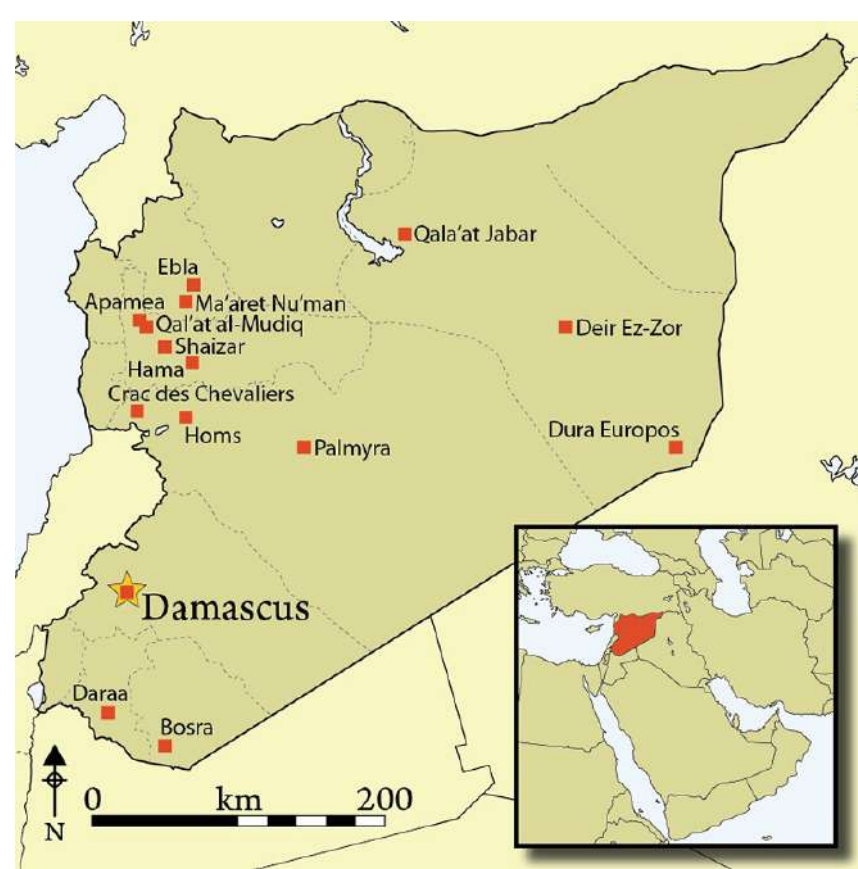
Setta gnostica di origine egizia:
i carpocraziani
(condanna di Ireneo fine II sec.)





Domus ecclesiae,
230 d.C.
Dura Europos, Siria

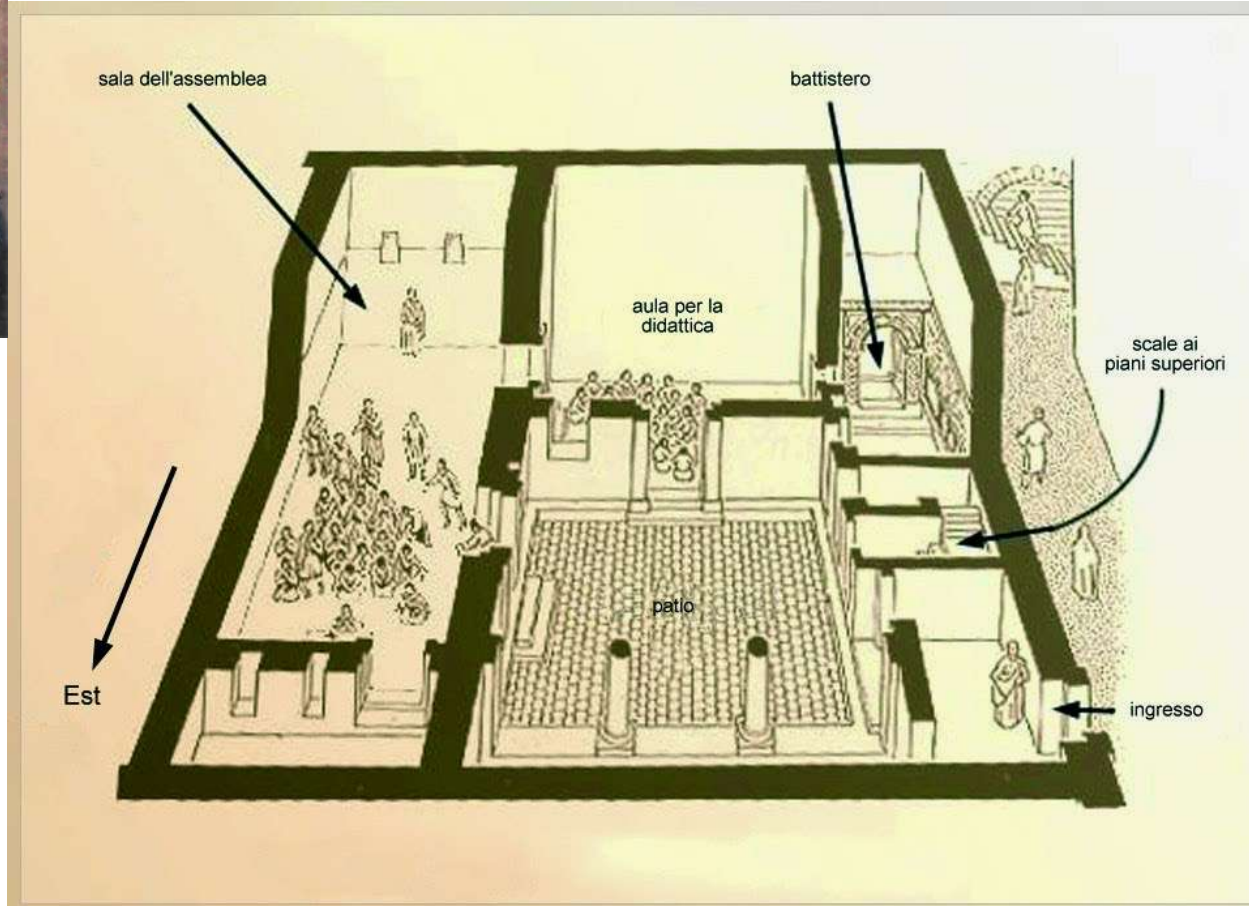


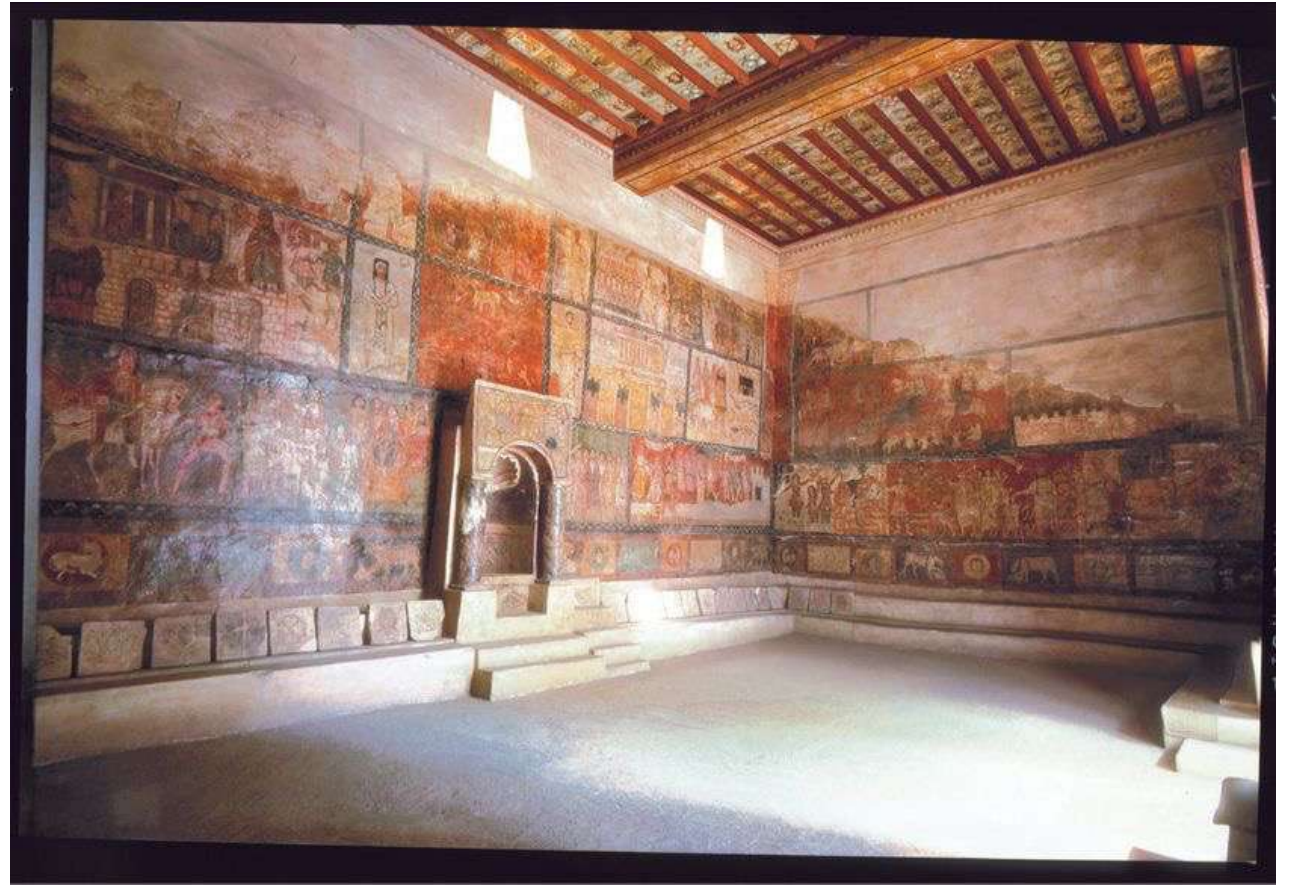




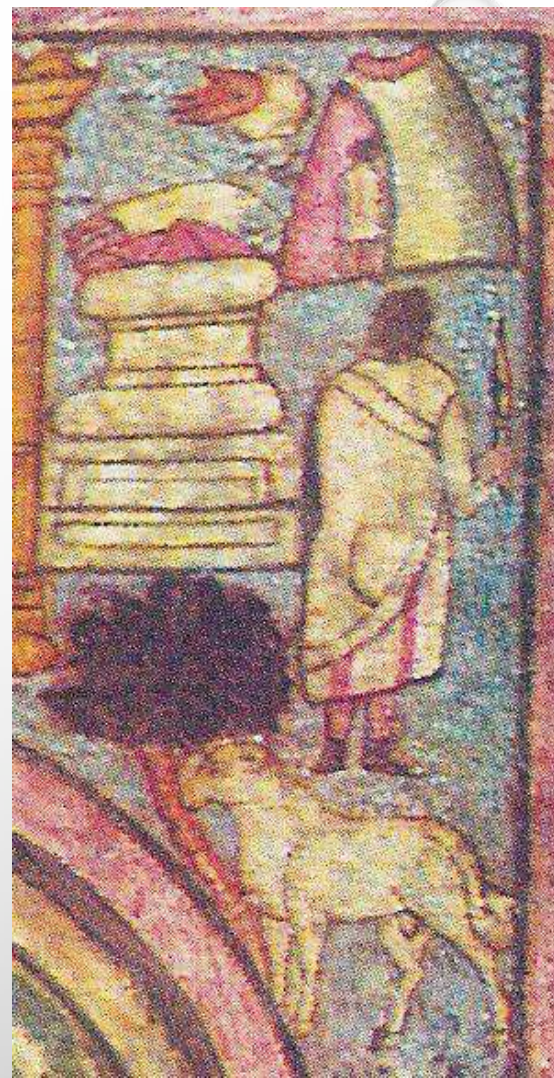
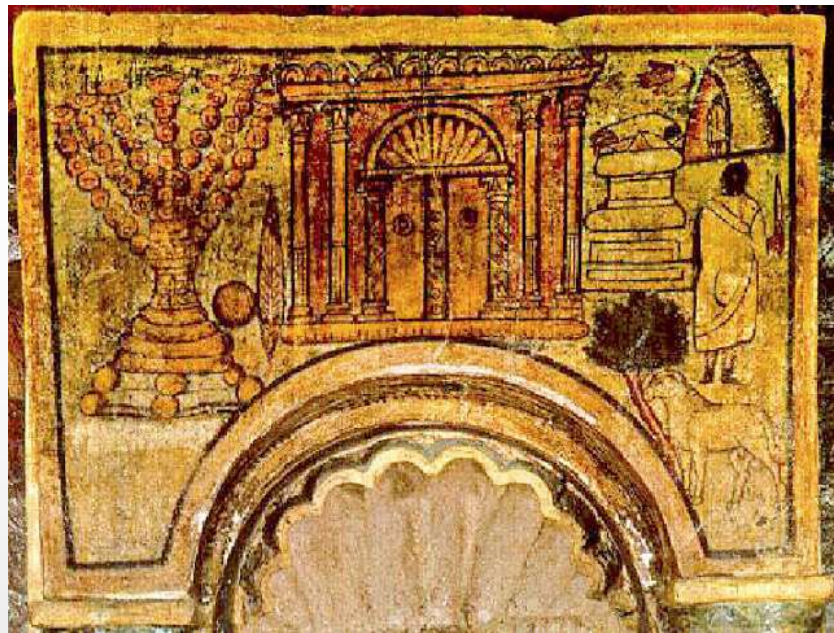
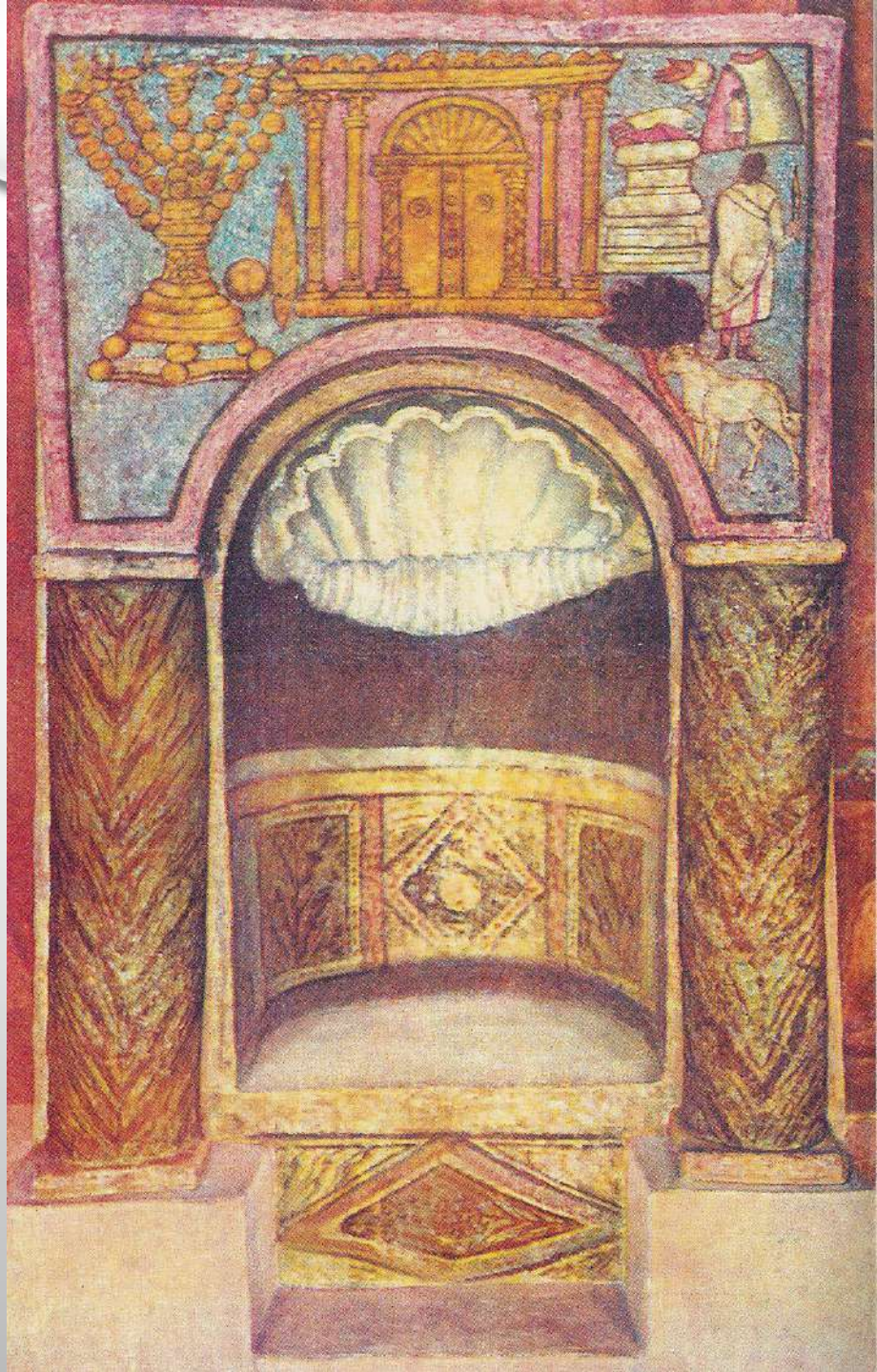
**DURA-EUROPUS
(SYRIA)**

SOURCES: Tim Cornell & John Matthews, eds. Atlas of the Roman World. Facts on File, 1982, p. 160.
 Photo: Gerster, G., and R.-B. Wartke. *Flugbilder aus Syrien. Von Antike bis zur Moderne*. Mainz am Rhein: Verlag Philipp von Zabern, 2003.

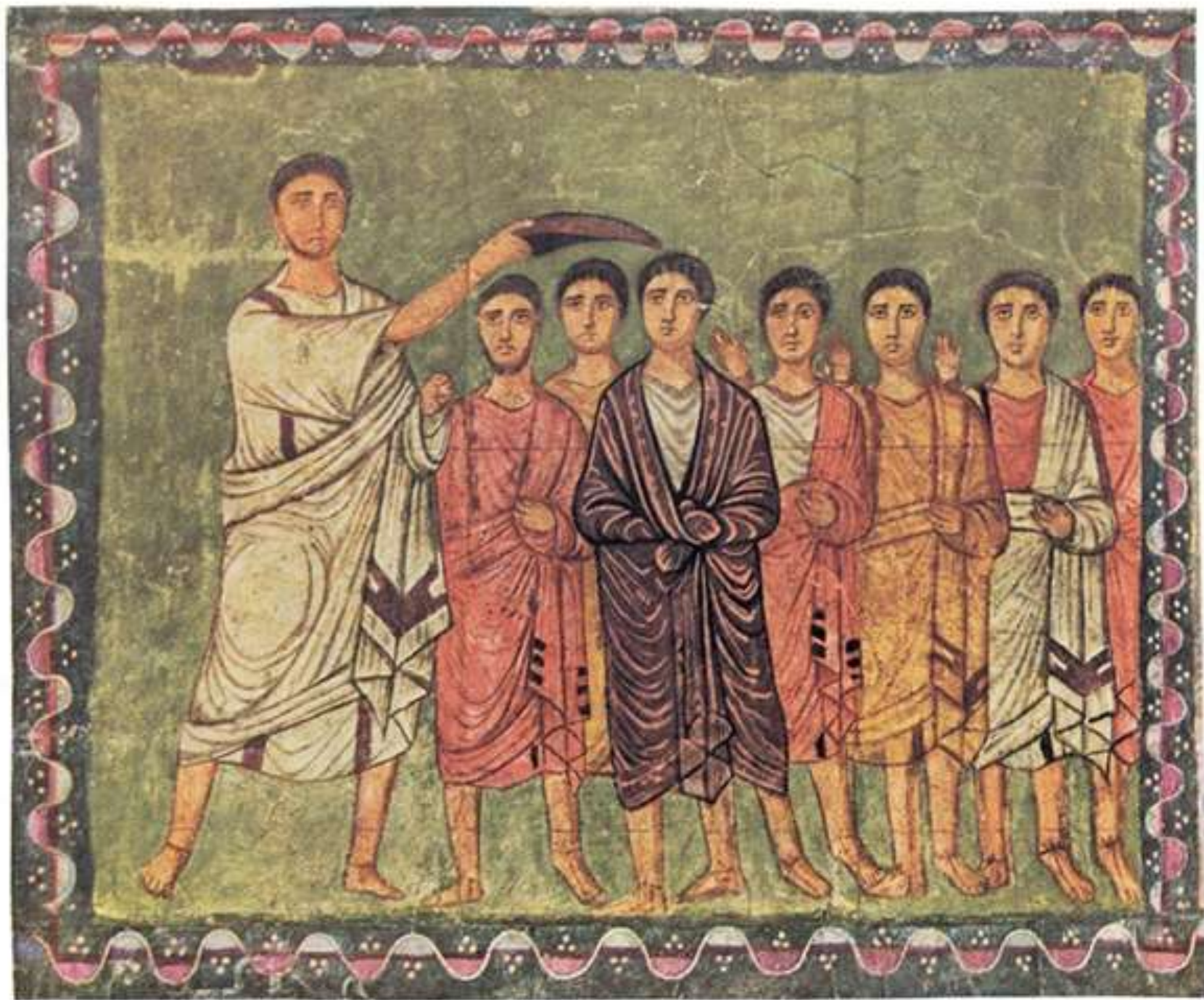




Sinagoga, 150 d.C. (244-245 d.C.)
Dura Europos, Siria







Sinagoga di Bet Alpha, mosaico pavimentale, V-VI secolo
Valle di Beit She'an (nord-est), Israele





© Biblewalks.com

ΜΝΙΣΘΟΥΣΙΝΥΤΕ
ΧΝΙΤΟΥΕΥΚΑΜΝΟΝ
ΤΕΣΤΑΕΡΓΟΝΤΟΝ
ΤΩΜΑΡΙΑΝΟΚΡΑΙ
ΑΝΙΝΑΣΥΟΚΑΙ

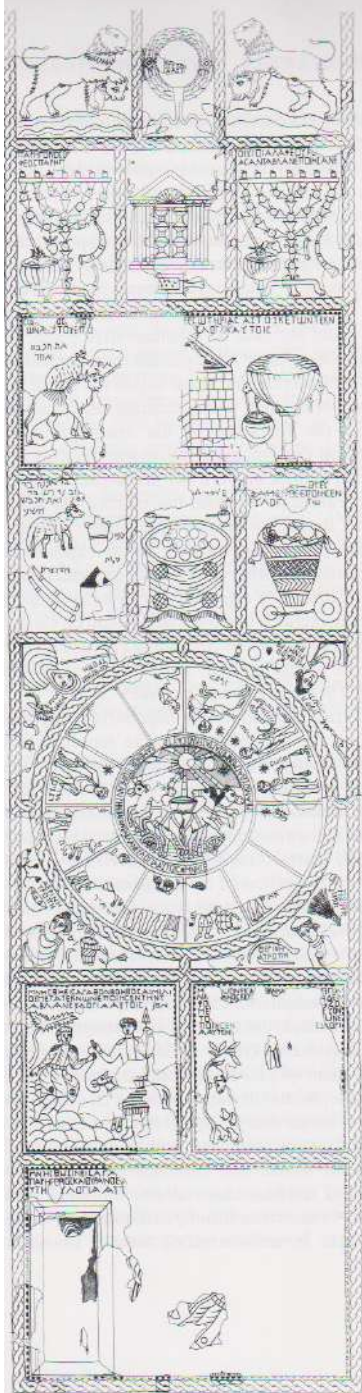
ΑΝΤΙΣΤΑΝΤΕΣ
ΑΝΤΙΣΤΑΝΤΕΣ
ΑΝΤΙΣΤΑΝΤΕΣ
ΑΝΤΙΣΤΑΝΤΕΣ
ΑΝΤΙΣΤΑΝΤΕΣ

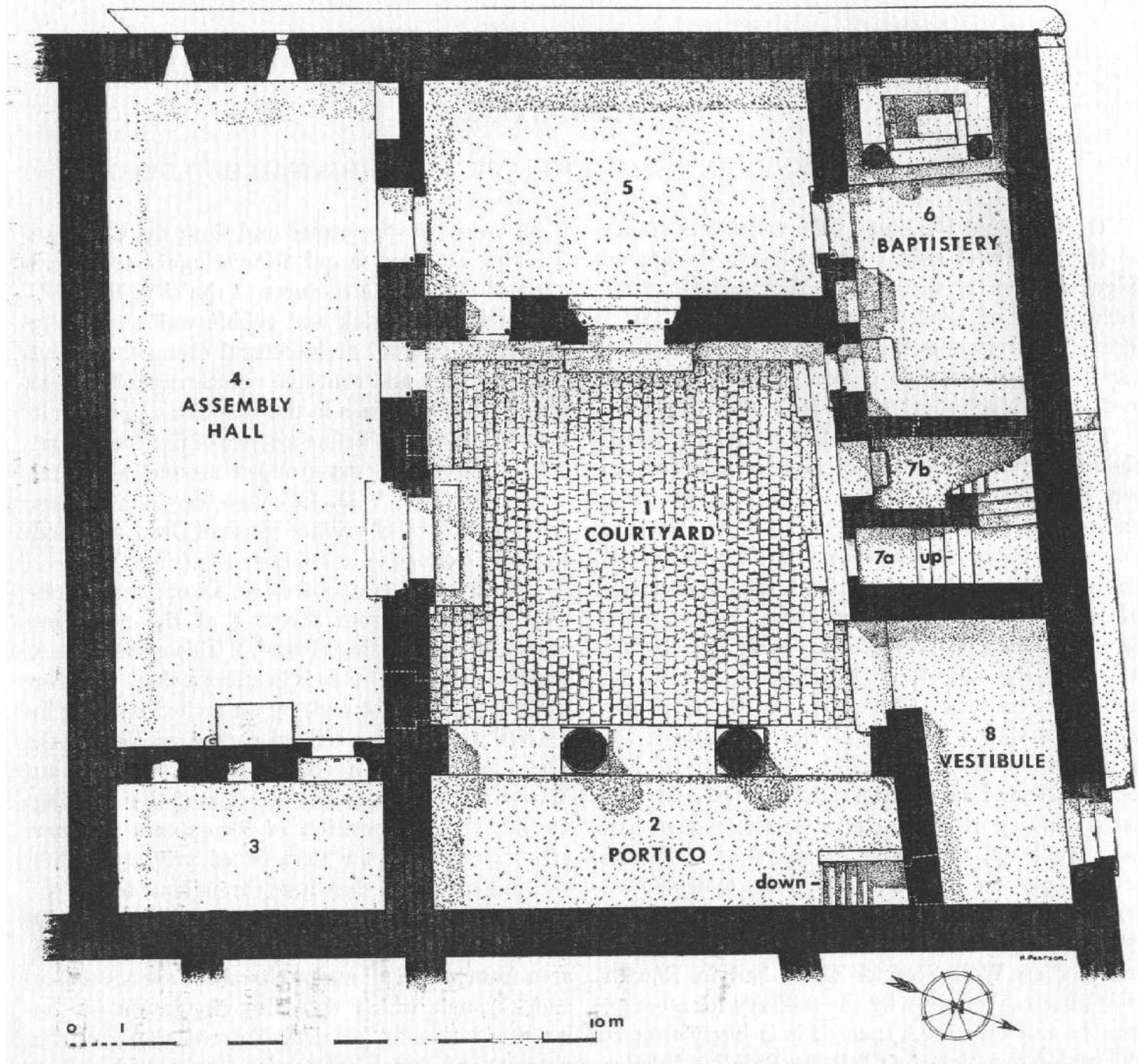
ΑΝΤΙΣΤΑΝΤΕΣ



Sinagoga di Sepphoris, mosaico pavimentale
VI secolo







Domus ecclesiae, 230 d.C.
Dura Europos, Siria



SCALE 1/4" = 1' 0"

HENRY PLAMERON, D.D.



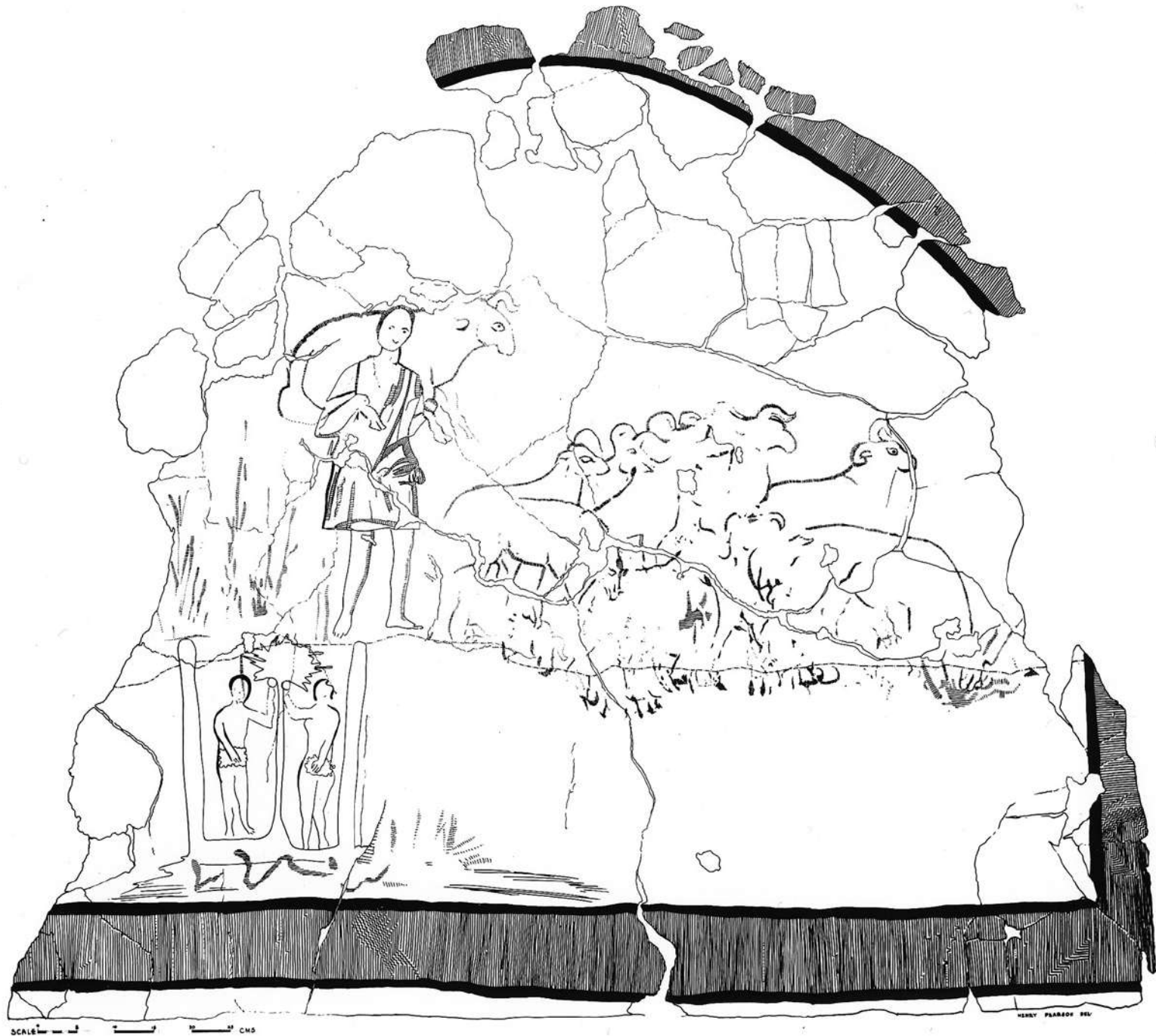






The Christian Chapel at Dura-Europos
Drawing of the fresco of the so-called
Women at the Tomb on the North Wall
Date: December 31, 1962
Scale: 1:5
Drawing: Bernard M. Boylston





SCALE 0 1 2 3 4 5 CM

HENRY PARSONS DEL.









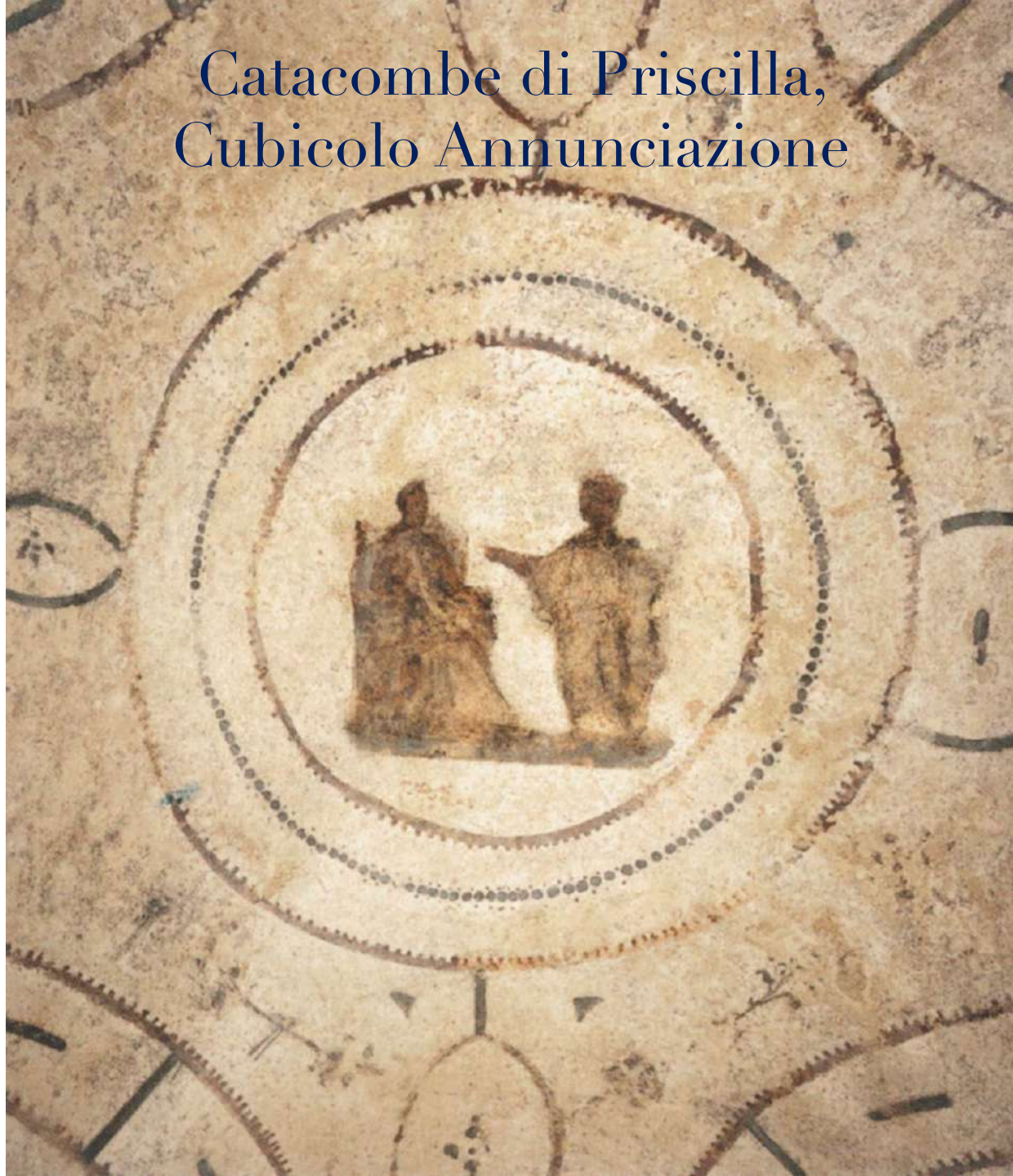
Catacombe
Roma



Catacombe di Priscilla metà III secolo

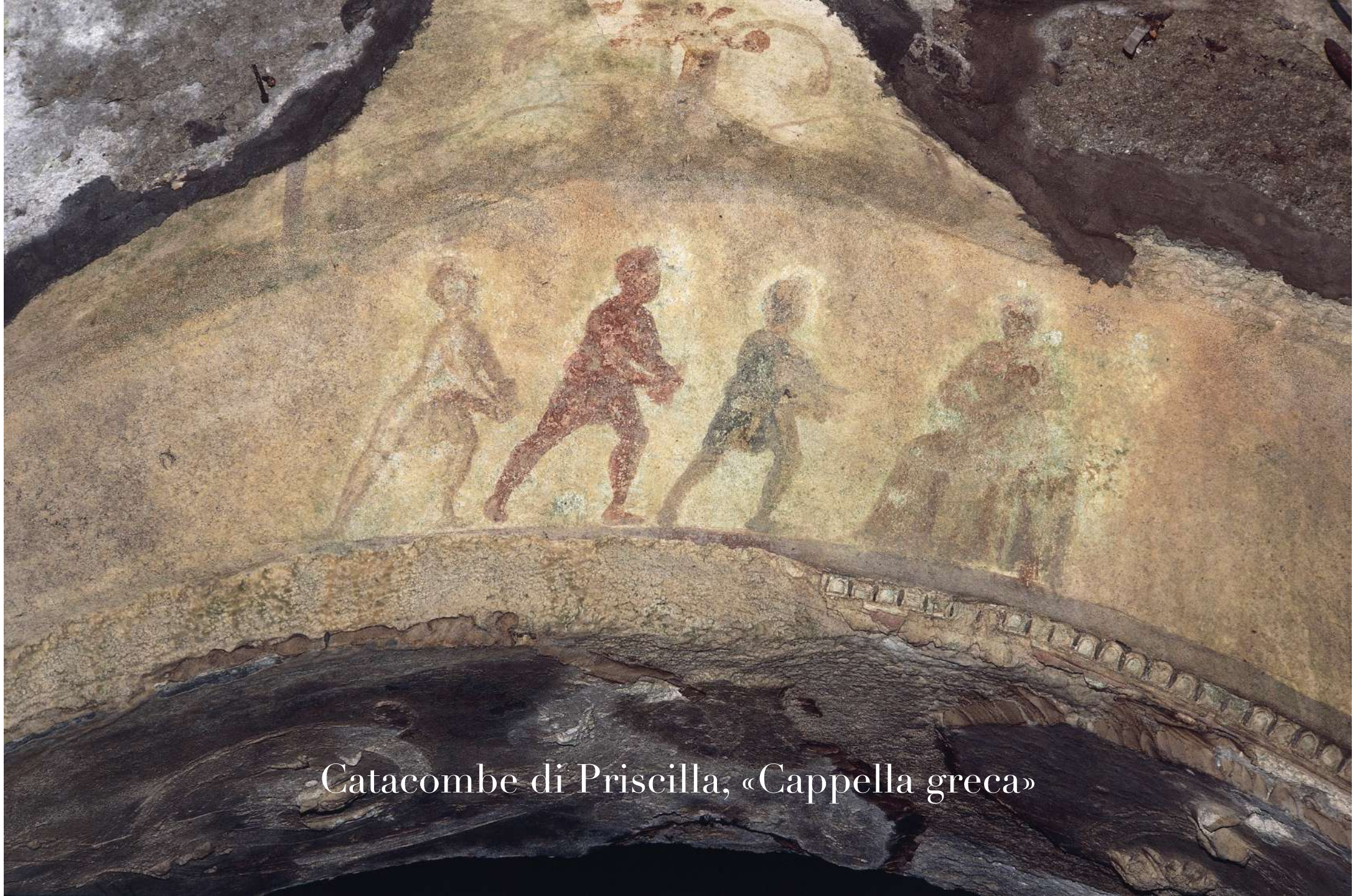


Catacombe di Priscilla,
Cubicolo Annunciazione



gettyimages
DEA / V. PIROZZI

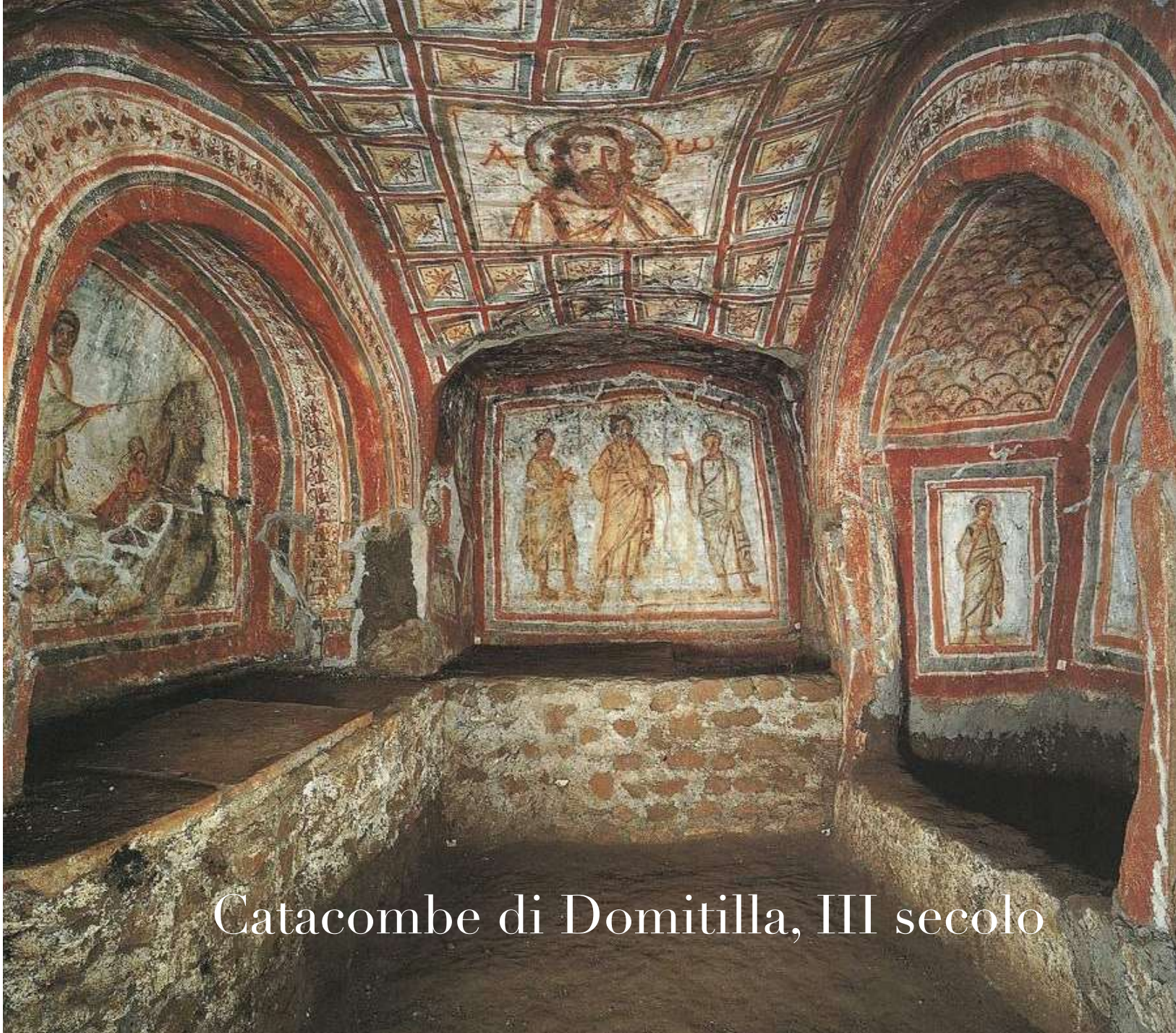
25 YEARS



Catacombe di Priscilla, «Cappella greca»

Necropoli vaticana, Mausoleo M,
primo quarto III secolo





Catacombe di Domitilla, III secolo



POSSIO



Group
King
King
King
40



Catacombe dei santi Pietro e Marcellino, fine III secolo



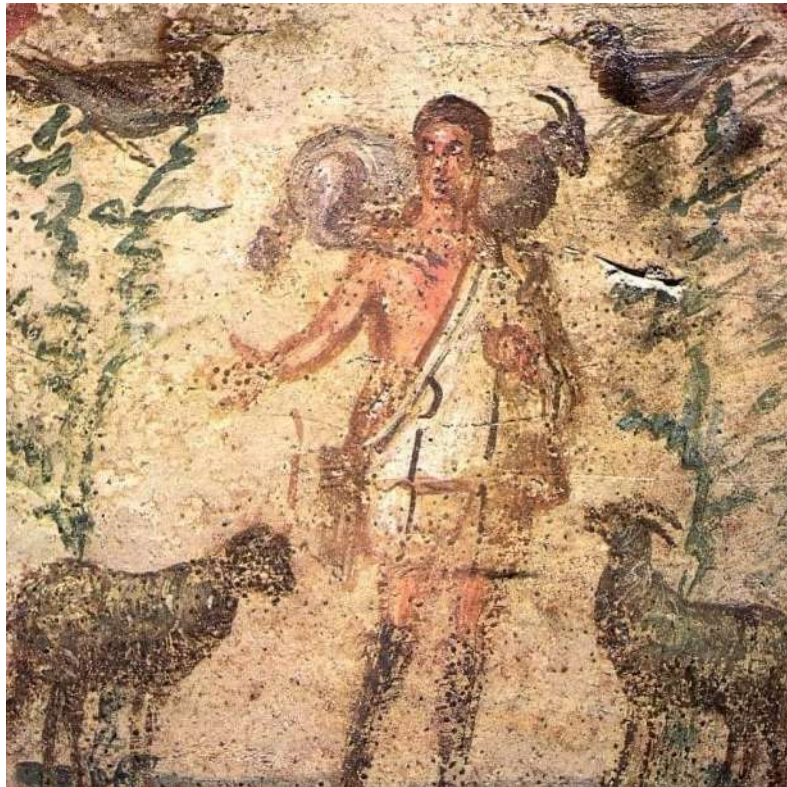


Catacombe dei santi
Marco e Marcelliano
IV secolo



Catacombe di Priscilla, Cubicolo della velata, seconda metà III secolo



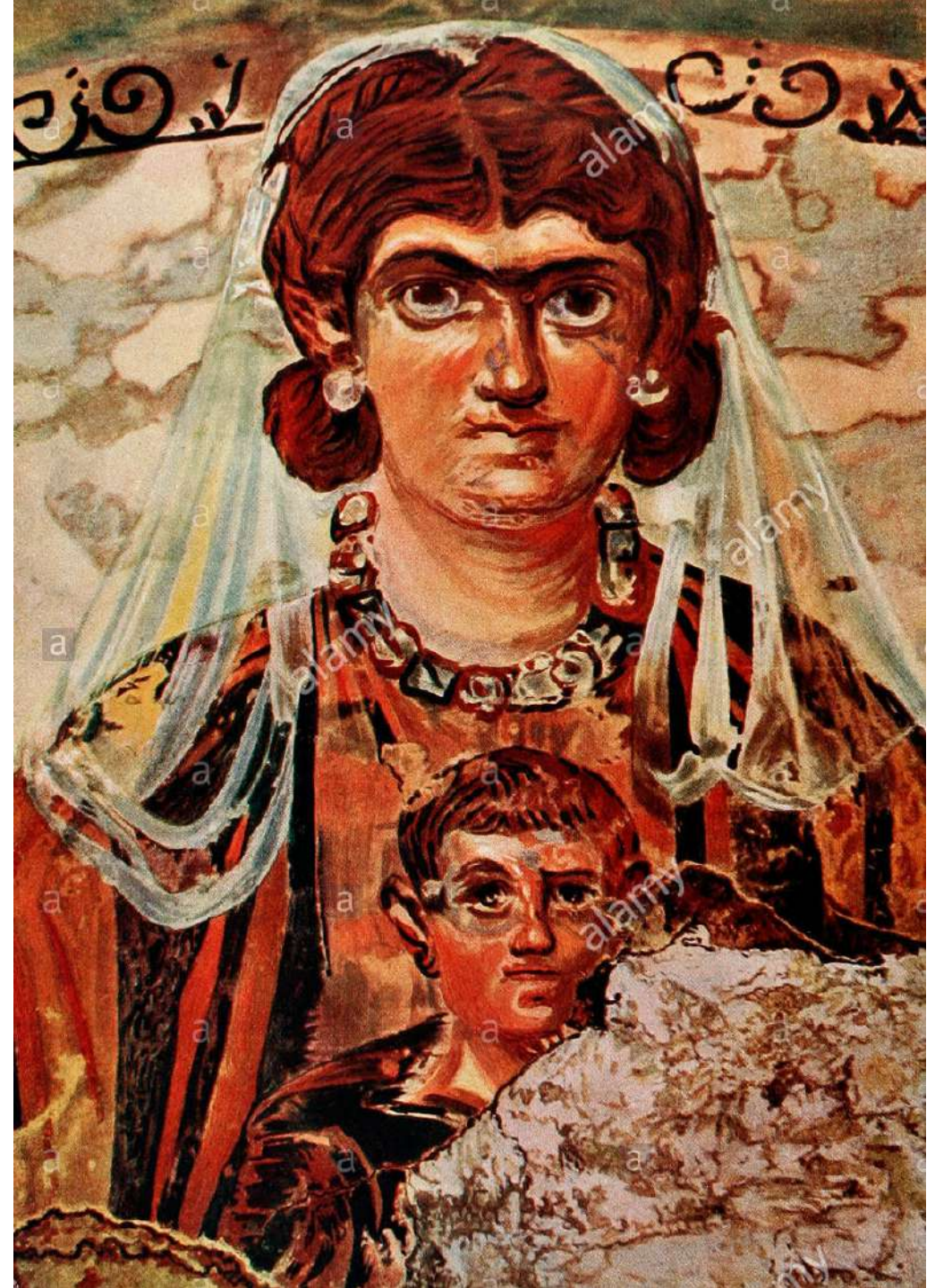






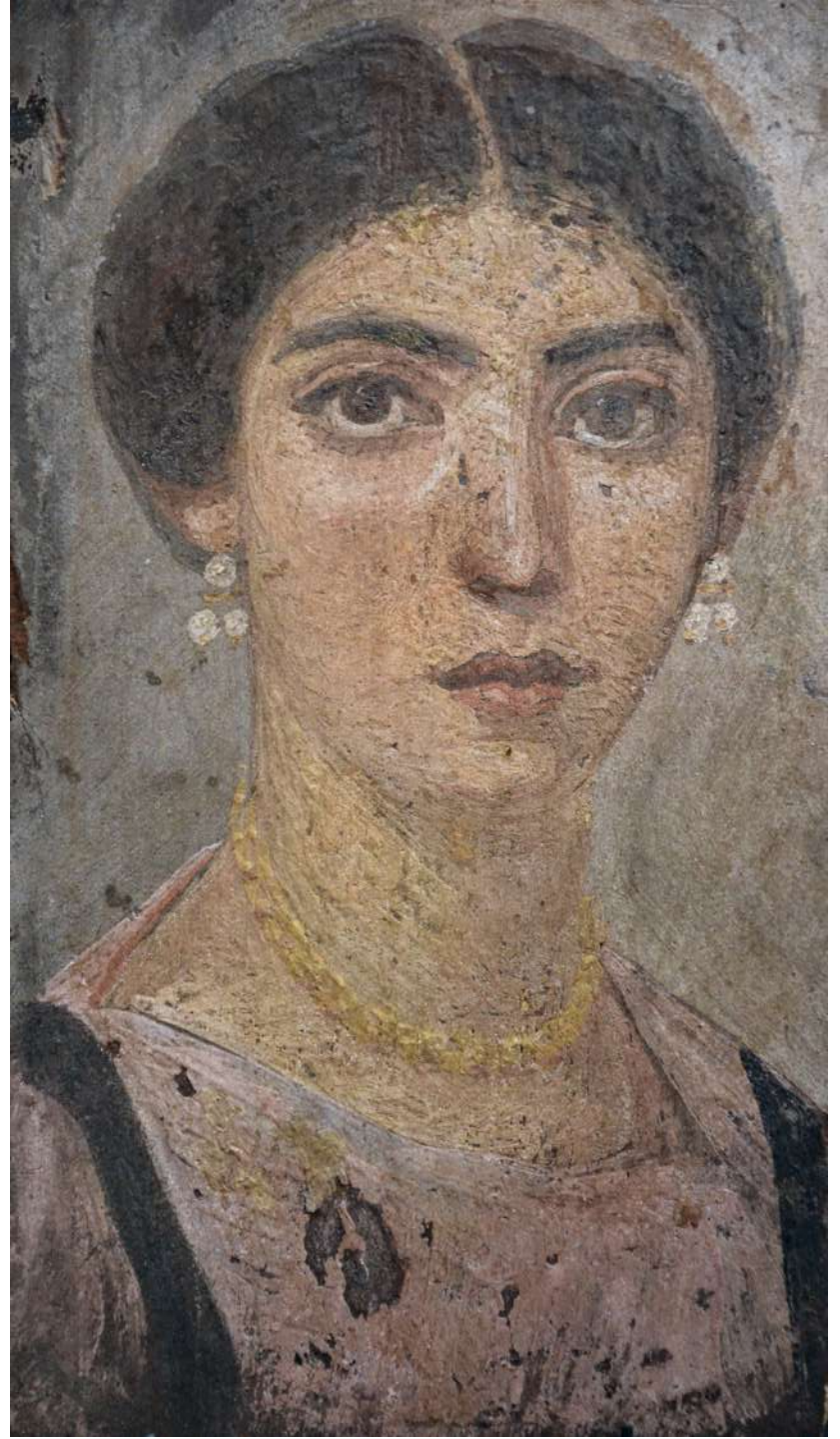


Cimitero Maggiore, cubicolo Vergine orante
Fine IV-inizio V secolo



Catacombe di Comodilla
Metà IV secolo







Catacombe di Santa Tecla
IV-V secolo

